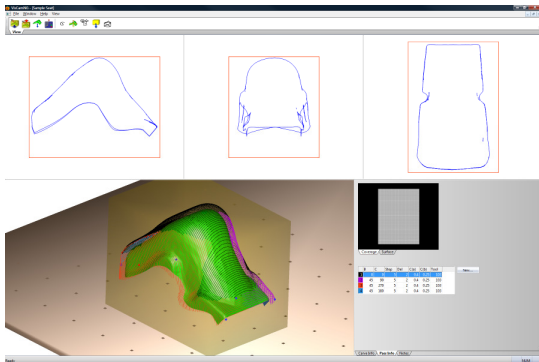








Canfit ™ Visual CAM NG™



- The **Canfit ™ Visual CAM NG™** software program works in conjunction with all of the **Canfit ™** design programs and the **Canfit ™ P&O 6-axis carver**.
- Once the carving block has been selected, **Canfit ™ Visual CAM NG™** creates a carve file that can be carved on the **Canfit ™ P&O 6-axis Carver**.
- **Easy to operate**
It will save the user time and money in the process of carving finished shapes.
- **Carve your shape the way YOU want**
Functions within the **Canfit ™ Visual CAM NG™** software allow the user to position the shape within the block in any orientation.
- **Reduce Waste**
Create custom block sizes for each individual patient.

Technical Specifications

Computer Hardware

Recommended system configuration:

- Operating System: WinXP Pro or Vista Business
- Memory: 2 GB RAM or more
- Hard Disk Space: 80GB hard drive with at least 5GB free for program files & data
- Modern Processor: triple core or quad core
- Name brand graphics card (nVidia GeForce or ATI Radeon) with Microsoft® Certified drivers
- No onboard graphics adapters
- Resolution: 1024 X 768 or greater
- Mouse

Supported Hardware

Carvers:

Canfit ™ P&O 6-axis Carver

Please contact your sales representative for further information.

VORUM
RESEARCH CORPORATION
8765 Ash Street, Suite 6
Vancouver, British Columbia V6P6T3 Canada
Tel: 604 321-7277
Fax: 604 321-5345
e-mail: canfit@vorum.com
web page: www.vorum.com