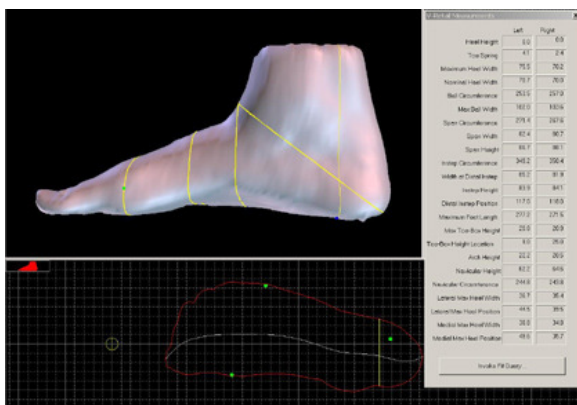


Canfit ™ Retail Matching Software



- Intelligent software matches a customer's foot scan data to the last database and calculates the best fit.
- The program's matching rules can be adapted to shoe design requirements. Twenty-three (23) base measurements can be activated depending on the design, materials and function of the shoe.
- Tolerance can be adjusted and degree of accuracy can be established on specific measurement parameters. These unique features provide manufacturers maximum production control and flexibility.



Technical Specifications

Computer Hardware

Recommended system configuration:

- Operating System: WinXP Pro
- Memory: 2 GB RAM or more
- Hard Disk Space: 80GB hard drive with at least 5GB free for program files & data
- Modern Processor: triple core or quad core
- Name brand graphics card (nVidia GeForce or ATI Radeon) with Microsoft® Certified drivers
- No onboard graphics adapters
- Resolution: 1024 X 768 or greater
- Mouse

Please contact your sales representative for further information.

VORUM
RESEARCH CORPORATION
8765 Ash Street, Suite 6
Vancouver, British Columbia V6P6T3 Canada
Tel: 604 321-7277
Fax: 604 321-5345
e-mail: canfit@vorum.com
web page: www.vorum.com